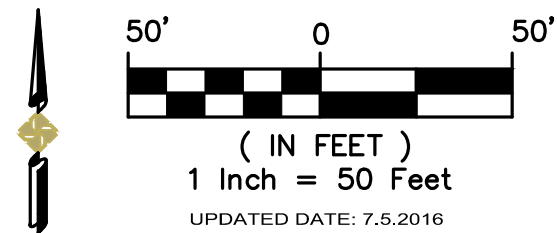
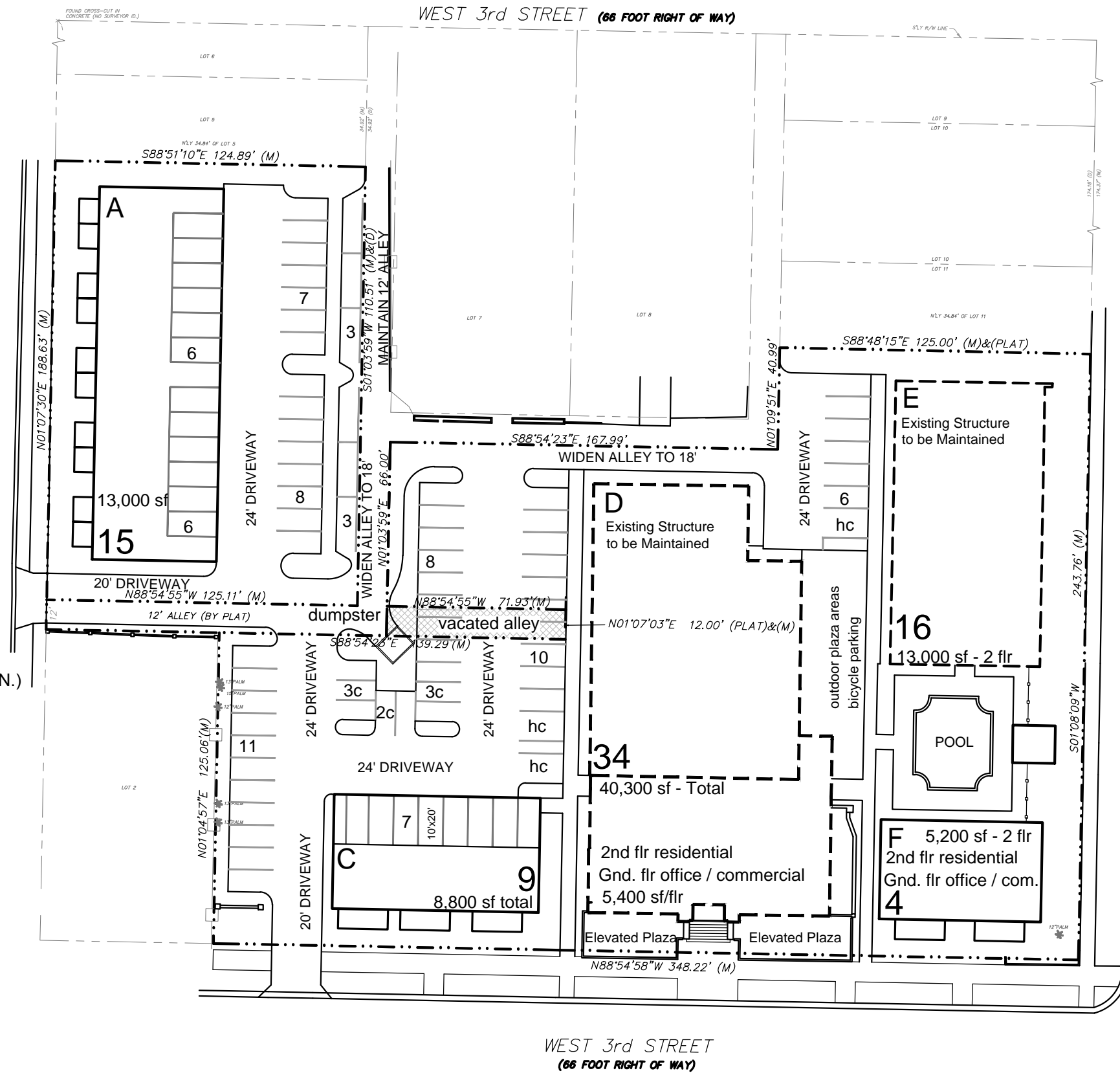


July 5, 2016 (10:22:15 EST) C:\USERS\LORETTA\APPDATA\LOCAL\TEMP\AC\PUBLISH_2660\PUD MASTER PLAN - FINAL.DWG

LAND-USE TABULATIONS

PARCEL SIZE: 2.12 ACRES
 VACATED ROW: 861 SF
 MAX. BLDG COVERAGE: 50%
 MULTI-FAMILY UNITS: 78 TOTAL
 PARKING SPACES: 86 TOTAL ±
 TOTAL CONDITIONED SF: 80,000 ±
 TOTAL NON-RESIDENTIAL SF: 8,000 SF ± (10% MIN.)



1341 Pearl Street

PUD MASTER SITE PLAN - JACKSONVILLE, FL

GENESIS
FROM VISION TO REALITY

9822 TAPESTRY PARK CIR, SUITE 201
JACKSONVILLE, FL 32246
Phone 904.730.9360
www.GenesisGroup.com
FL CA 00009660 | FL LB 0006816 | FL LC 26000202